



FORTUNA
GLOBAL SUPPLY CHAIN SYSTEMS



FORTUNA
GLOBAL SUPPLY CHAIN SYSTEMS



FORTUNA
LASTMILE AI



Website: www.fortunaglobalsupplychain.com

E-mail: info@fortunaglobalsupplychain.com

FORTUNA GLOBAL SUPPLY CHAIN SYSTEMS

“The Future of Enterprise Intelligence.”

Company Overview

Fortuna Global Supply Chain Systems is a next-generation enterprise technology company revolutionizing the global logistics and supply chain landscape.

With a vision to create **intelligent, transparent, and connected ecosystems**, Fortuna blends innovation, data intelligence, and automation to help businesses achieve supply chain excellence.

Established with the belief that **efficiency is the new currency**, Fortuna empowers organizations to manage operations smarter — from demand planning to last-mile delivery — through real-time insights and seamless digital integration.

We are not just a technology provider; we are **partners in transformation** — driving global supply chain optimization with precision, performance, and predictive intelligence.

Fortuna Last Mile AI – “AI-driven Last-Mile Route & Risk Optimization Platform”

Fortuna Last-Mile is an advanced, AI-driven **Route & Risk Optimization** Platform designed to ensure precision, efficiency, and intelligence in the final leg of logistics operations. Built as part of the **Fortuna Global Supply Chain Systems Suite**, it leverages machine learning, predictive analytics, and real-time visibility to streamline last-mile deliveries, minimize costs, and enhance customer satisfaction. The platform seamlessly integrates with transportation management, warehouse operations, and demand planning systems — ensuring complete alignment between planning and execution.



The purpose of **Fortuna Last Mile AI** is to transform last-mile delivery challenges into opportunities through **intelligent orchestration, dynamic routing, and proactive risk management**. Our vision is to empower enterprises with **predictive, data-driven delivery intelligence** that ensures every mile is optimized for time, cost, and sustainability — paving the way for the future of **autonomous and intelligent last-mile ecosystems**.

⚙️ 2. System Architecture

Fortuna Last Mile AI is a cloud-native, modular SaaS ecosystem that connects planning, real-time tracking, and risk intelligence into one cohesive digital layer.

Key Layers :

1. **Data Integration Layer** – Aggregates data from TMS, WMS, ERP, and IoT devices.
2. **AI Core Engine** – Performs predictive analytics, route optimization, and anomaly detection.
3. **Real-Time Visibility Layer** – Provides live shipment status, ETA predictions, and geofencing.
4. **Risk & Exception Management Layer** – Detects, analyzes, and mitigates operational disruptions.
5. **User Interface Layer** – Interactive dashboards and mobile apps for drivers, dispatchers, and managers.
6. **API & Integration Layer** – Enables seamless connectivity with third-party logistics and ERP systems.

⚙️ 2. System Architecture Diagram

FORTUNA LASTMILE AI



**ROUTE
OPTIMIZATION
ENGINE**



**DELIVERY &
DRIVER
MANAGEMENT**



**RISK & EXCEPTION
MANAGEMENT**



**CUSTOMER
EXPERIENCE**



**ANALYTICS
& CONTINUOUS
OPTIMIZATION**

CLOUD

Product Modules, Sub-Modules & Operational Functionality

📍 1: Route Optimization & AI Planning

📁 Submodules:

- **Dynamic Route Planner:** Auto-creates best delivery paths using live order and location data.
- **AI Traffic Predictor:** Anticipates traffic congestion and adjusts routes dynamically.
- **Multi-Drop & Load Consolidator:** Groups deliveries intelligently to optimize resource usage.
- **Carbon Impact Analyzer:** Suggests eco-friendly routes with minimal emissions.

⚙️ Operational Functionality:

- Leverages AI algorithms to generate optimal delivery routes minimizing time and fuel costs.
- Dynamically re-routes deliveries based on live traffic, weather, and delivery constraints.
- Considers load balancing, vehicle type, and priority levels in route computation.
- Continuously learns from historical data to improve future routing precision.



2: Delivery & Driver Management

Submodules:

- **Driver Assignment Optimizer:** Allocates the best-suited driver for each route.
- **Smart Dispatch Console:** Automates dispatch workflows with live route insights.
- **ePOD (Electronic Proof of Delivery):** Digitally captures customer confirmation with geo-tagging.
- **Driver Performance Analytics:** Evaluates driver efficiency and safety KPIs.

Operational Functionality:

- Automates driver assignment based on proximity, capacity, and performance metrics.
- Enables real-time communication between dispatchers and delivery personnel.
- Monitors driver performance, route adherence, and delivery efficiency via analytics.
- Supports digital proof of delivery (ePOD) and shift-level task scheduling.

⚠️ 3: Risk & Exception Management

📁 Submodules:

- **Predictive Risk Engine:** Identifies potential delivery delays and disruptions early.
- **Exception Control Tower:** Monitors ongoing operations and flags high-impact issues.
- **Automated Escalation System:** Triggers alerts and corrective actions in real time.
- **Incident Replay & RCA:** Reconstructs incident timelines for precise root-cause analysis.

⚙️ Operational Functionality:

- Detects delivery delays, route deviations, and vehicle breakdowns through AI-driven alerts.
- Automates exception handling workflows with predefined escalation rules.
- Analyzes recurring disruptions to identify high-risk zones or patterns.
- Provides predictive risk scoring to proactively mitigate operational failures.

4: Real-Time Visibility & Tracking

Submodules:

- **Live GPS & Telematics Feed:** Tracks fleet and driver movement continuously.
- **Predictive ETA Engine:** Calculates accurate ETAs using ML-driven models.
- **Geo-Fence & Zone Monitoring:** Monitors vehicle movements within defined service areas.
- **IoT Condition Sensors:** Captures live environmental data for sensitive shipments.

Operational Functionality:

- Provides live GPS-based vehicle tracking with dynamic route deviation alerts.
- Enables end-to-end shipment visibility across hubs, routes, and delivery zones.
- Supports geo-fencing, exception alerts, and automatic ETA recalculations.
- Integrates driver telemetry, IoT data, and digital proof-of-delivery (ePOD) for transparency.

5: Customer Experience & Engagement

Submodules:

- **Live Tracking Portal:** Offers customers a real-time view of deliveries.
- **Predictive Notifications:** Sends automatic alerts about delivery timing or changes.
- **Delivery Preference Manager:** Lets customers reschedule or redirect shipments.
- **Feedback & NPS Engine:** Collects satisfaction data to improve service.

Operational Functionality:

- Enables real-time customer notifications for order status, ETA, and delivery updates.
- Provides branded digital tracking links and interactive communication channels.
- Captures post-delivery feedback and sentiment data to measure service quality.
- Integrates loyalty, satisfaction, and escalation management within one unified interface.

6: Analytics & Performance Optimization

Submodules:

- **Operational KPI Dashboard:** Displays performance indicators for each delivery region.
- **A/B Route Testing Framework:** Tests alternative route strategies for efficiency gains.
- **Cost & Margin Analyzer:** Tracks delivery economics and profitability.
- **Predictive Model Retraining:** Continuously improves AI models for better accuracy.

Operational Functionality:

- Delivers real-time KPIs on delivery efficiency, route performance, and driver productivity.
- Uses AI-driven predictive analytics to identify delivery bottlenecks and optimize outcomes.
- Provides dynamic dashboards and trend visualizations for data-backed decision-making.
- Continuously learns from operational data to enhance model accuracy and forecasting precision.

7: Integration & API Layer

Submodules:

- **ERP / WMS / TMS Connectors:** Links internal systems for synchronized data sharing.
- **Web hooks & Event Bus:** Enables real-time event triggers between systems.
- **Developer SDKs:** Simplifies integration with custom applications.
- **Security & Governance Framework:** Enforces encrypted, role-based data access.

Operational Functionality:

- Enables seamless data exchange with ERP, TMS, CRM, and third-party logistics systems.
- Supports RESTful APIs and webhooks for real-time status updates and event triggers.
- Facilitates easy onboarding of partner systems through standardized API frameworks.
- Ensures data consistency and integrity with secure authentication and audit trails.

⚙️ 8: Operations & Admin Controls

📁 Submodules:

- **Role & Permission Management:** Defines user access and system privileges.
- **Scenario & Rule Configurator:** Allows flexible setup of delivery SLAs and parameters.
- **System Monitoring Dashboard:** Tracks platform uptime and performance health.
- **Audit & Compliance Suite:** Maintains operational transparency with full audit logs.

⚙️ Operational Functionality:

- Centralized Command Dashboard
- Dynamic SLA & Policy Configuration
- User Role & Access Management
- Incident & Exception Handling Framework

Functional Workflows

- A.  **Order Intake** → Captures incoming delivery requests from ERP, e-commerce, or CRM systems in real-time.
- B.  **AI Route Planning** → Leverages AI and traffic intelligence to generate the most efficient delivery paths dynamically.
- C.  **Driver Assignment** → allocates optimal drivers and vehicles based on proximity, load capacity, and performance metrics.
- D.  **Tracking & ePOD** → Provides end-to-end shipment visibility through real-time GPS tracking and IoT integration.
- E.  **Customer Feedback** → Engages customers post-delivery with instant feedback and satisfaction surveys.
- F.  **Analytics & Continuous Learning** → Analyzes operational data across routes, drivers, and delivery patterns for performance trends.

Fortuna EAM Advantages

Feature	Business Value
<i>Faster Deliveries</i>	AI routing reduces transit time and idle miles.
<i>Cost Efficiency</i>	Dynamic optimization lowers operational expenses.
<i>Fully Visibility</i>	Real-time monitoring across every route and asset.
<i>Automation Driven</i>	Minimal manual intervention through intelligent workflows.
<i>Data driven Excellence</i>	Continuous AI learning enhances every delivery cycle.

Industries Served

Automotive & Industrial Manufacturing

FGSCM - supports the automotive sector with advanced logistics planning, vendor coordination, and predictive maintenance scheduling. From global parts movement to plant-level production support, our systems reduce lead times and enhance supply chain agility



FORTUNA
GLOBAL SUPPLY CHAIN SYSTEMS

Ports & Logistics

Fortuna supports the automotive sector with advanced logistics planning, vendor coordination, and predictive maintenance scheduling. From global parts movement to plant-level production support, our systems reduce lead times and enhance supply chain agility



Food & Beverage Distribution



Freshness and safety are at the heart of Food & Beverage - supply chains. We enable end-to-end visibility with IoT-driven tracking, automated quality checks, and predictive demand planning—ensuring traceability from farm to fork.



Fashion & Retail Industry

With High seasonal demand & agile supply chain Planning, Fortuna will empowers retailers with faster replenishment & reduces stock outs



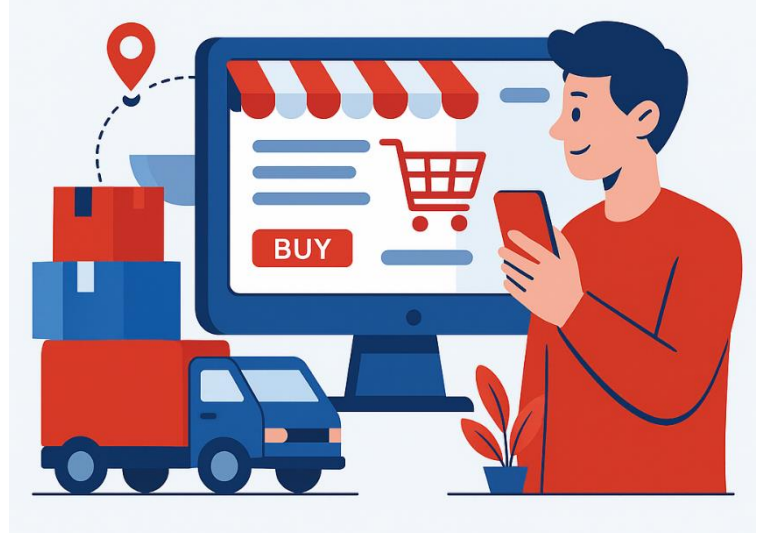
Pharma & Healthcare



Medical safety and regulatory compliance are non-negotiable. We provide automated solutions for cold chain logistics, product traceability, and compliance monitoring—ensuring life-saving medicines and healthcare products reach destinations safely and efficiently.

E-Commerce & Distributional Channels

In a fast-moving E-Com world, speed and efficiency are critical. Our platforms enable automated order management, demand forecasting, and last-mile delivery optimization—ensuring customers receive the right products, at the right time, every time.





Corporate Identity



Headquarters: Visakhapatnam, Andhra Pradesh, India

Website: www.fortunaglobalsupplychain.com

Email: info@fortunaglobalsupplychain.com